

Tomlin Middle School Drop Off and Pick Up Procedures

Tomlin Middle School Car Line

Sixth Grade Traffic Flow



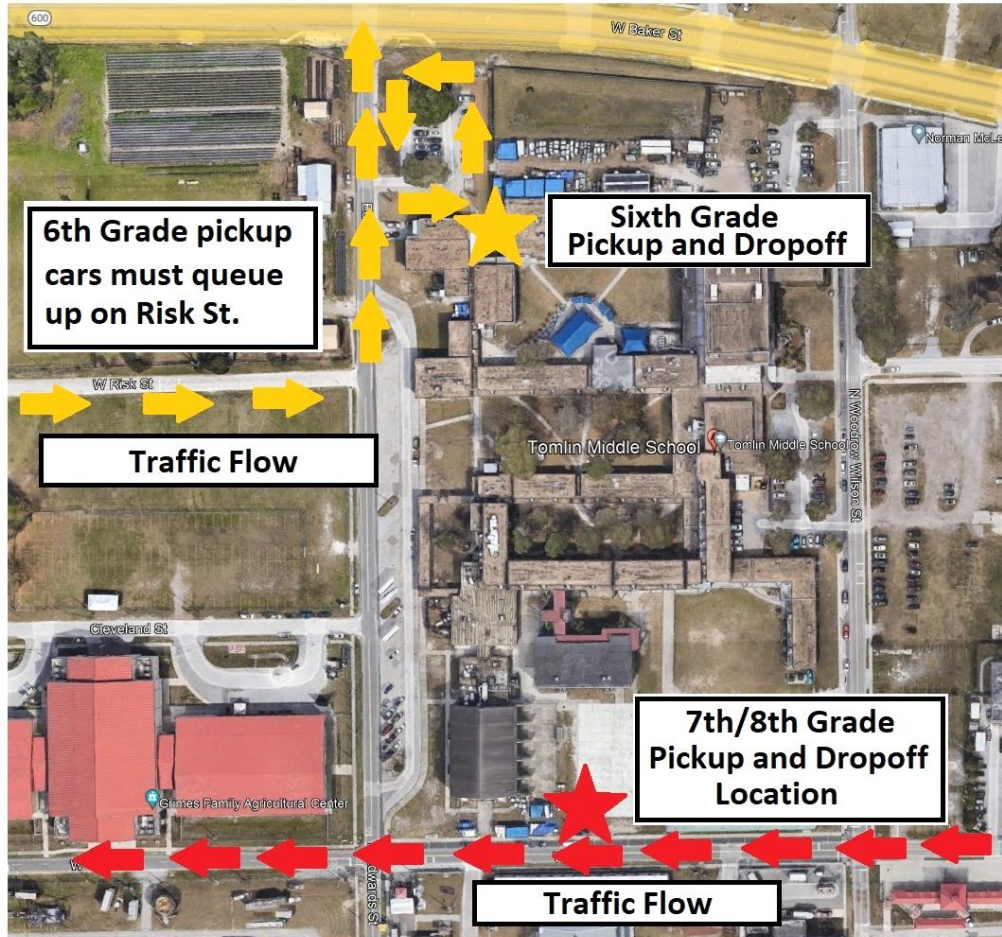
Sixth Grade
Pickup and Dropoff



7th/8th Grade Traffic Flow



7th/8th Grade
Pickup and Dropoff
Location



How late can parents pick up children after school?

- All afternoon car-riders need to be picked up in front of the school by 4:40PM (or until the pick-up line clears).
- Students who are left on the “car ramp” after the pick-up line clears, will be taken to the Main Office to contact their parents. There, parents will be required to present an ID to pick up their students at the Main Office.
- Students who have a pattern of being picked up late will need to register for the after-school care program (HOST or Boys and Girls Club).

What are the pick-up procedures?

The car rider pick-up and drop off points are as follows:

6th grade car riders must arrive and depart from the parking lot at the northwest corner of campus, across from the agriculture field. ***Note - cars must queue up on Risk St. while they wait to drop off or pick up students.***

7th and 8th grade car riders must arrive and depart from the gate in the south fence at the corner of the basketball court, near the gym. Cars must queue up on Oak Ave. while they wait to drop off or pick up students.

How early can parents’ drop-off children before school?

- All morning car-riders need to be dropped off at their assigned gate between 9:10AM-9:30AM (or as the drop-off line clears).
- Students who are left on the “car ramp” before the drop off time will be taken to the Main Office to contact their parents and could face disciplinary action.
- Students who have a pattern of being dropped off early will need to register for the before-school care program (HOST).

What are the drop-off procedures?

- After being dropped at the assigned gate, students must move to their assigned waiting area as shown:

6th grade	Patio
7th and 8th grade boys	Tennis Courts
7th and 8th grade girls	Cafeteria or Auditorium

- Breakfast will be available in all three locations.
- Bus riders will enter campus through the gate on the bus ramp and walk directly to their assigned waiting areas.
- Students who walk or ride bicycles must enter campus through the main entrance on the east side of campus.
- Students arriving late, after 9:35, must enter through the main entrance and sign in.